



February 17, 2020

Scott Olson, Esq.  
Young/Sommer LLC  
ATTORNETYS AT LAW  
Five Palisades Drive, Albany, NY 12205

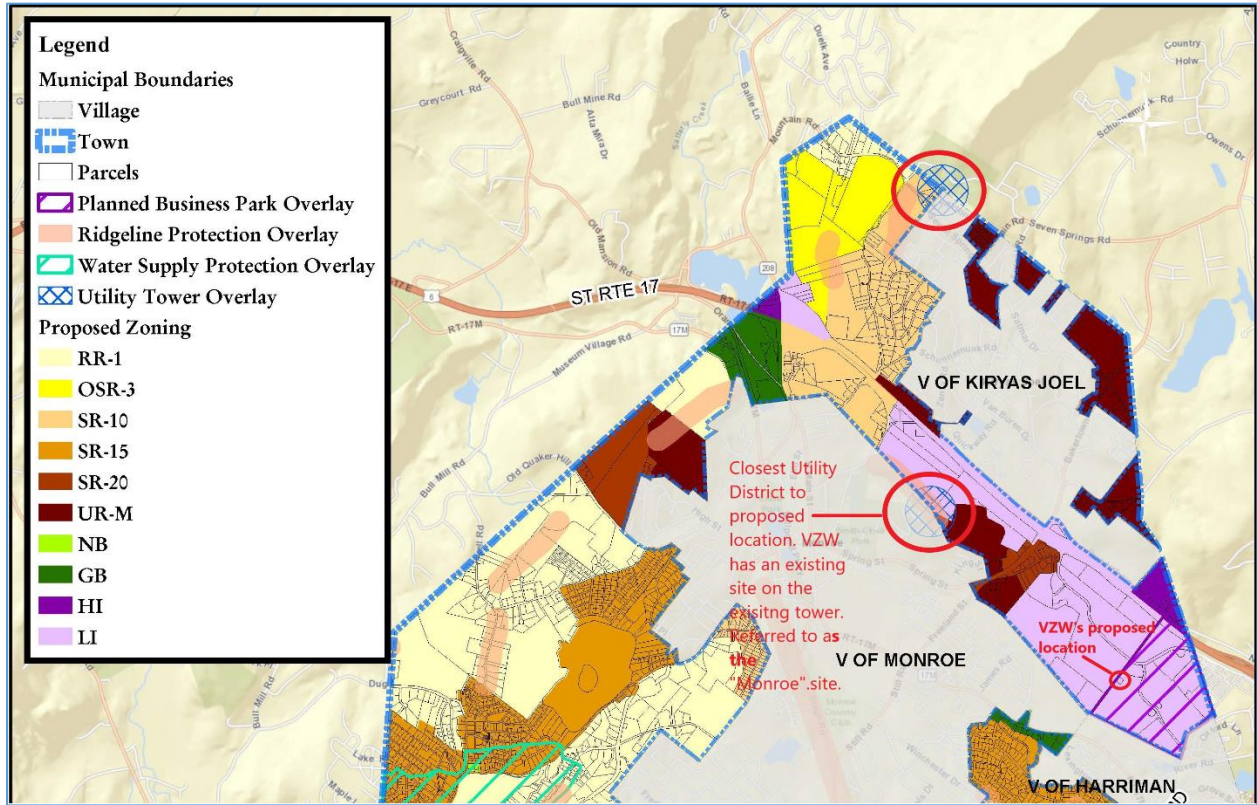
RE: Verizon Wireless "Barr Lane relationship to existing Tower Overlay Districts"

The following details are offered to address the comments made by the Zoning Board of Appeals at its January, 2020 meeting concerning Verizon Wireless' ability to locate a new site in one of the existing "Utility Tower Overlay" districts:

**Can the proposed wireless installation be located in an existing Utility Tower Overlay district? For the reasons that follow, the answer to that question is no. Locating the proposed site in one of the existing Utility Tower Overlay Zoning districts will not allow Verizon Wireless to provide the coverage and capacity relief required.**

**A. Verizon Wireless is already located in the nearby Utility Tower Overlay district.**

- a. Please refer to the following images detailing Verizon Wireless' use of the overlay district. The first map below confirms that Verizon Wireless has an existing site in the closest Utility Tower Overlay district. The RF Justification in the original application confirms that even with the use of the existing site in the closest Utility Tower Overlay district, two significant deficiencies exist within the network relative to the proposed service area associated with the proposed site.
- b. These two problems (which support the need for a new facility at the proposed location) are:
  - 1 Coverage. Even with the use of the closest Utility Tower Overlay district, there are existing gaps in service at 2100 MHz in the target service area, as well as areas of variable coverage resulting with the inability of the 2100MHz capacity coverage layer (from existing sites) to provide the necessary offload required by 700/2100MHz layer related to existing network usage.
  - 2 Capacity. As noted above and further detailed in the RF Justification (RFJ) dated May 17, 2019, the existing coverage from Verizon Wireless sites within the overlay districts is overloaded requiring network densification to resolve.
- c. Based on the foregoing, Verizon Wireless' use of existing sites in the Utility Tower Overlay district still results in network coverage and capacity issues which justify the need for the proposed site at its current location.

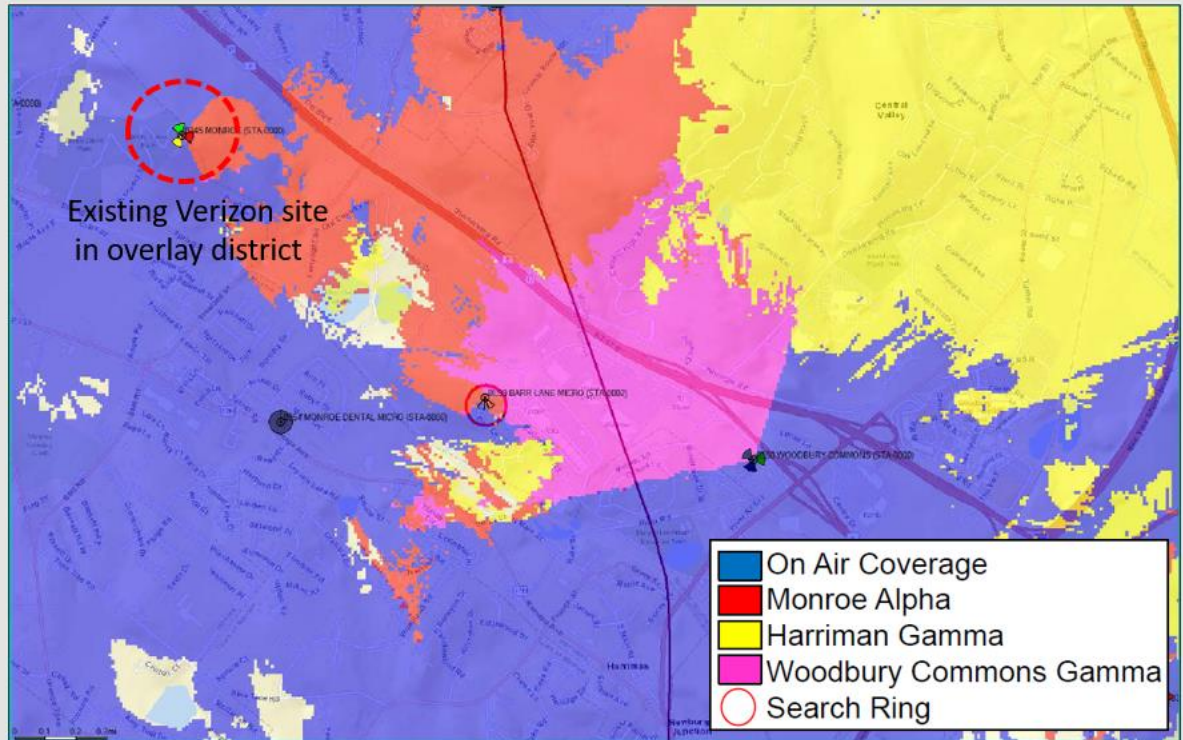


**B. Supporting coverage plot.**

- a. Verizon Wireless coverage and capacity from existing Utility Tower Overlay districts is exhausted requiring network densification. Barr Lane will resolve these issues in this area. Please refer to the aforementioned RF Justification for further details.

### Existing 2100MHz Best Server -105dBm RSRP

Best Server plots depict the actual footprint of each sector in question at one threshold so the viewer can accurately evaluate the area offloaded by the new sites dominant signal area.



The map above represents coverage from existing sites, with the sites in need of capacity offload detailed in the legend above. Blue coverage is from other on air sites. Network densification is required to resolve the significant gap shown above.



Very truly yours,

*Michael R. Crosby*

Michael R. Crosby  
Engineer IV – RF Design  
Verizon Wireless